



# CERES RANCHER

## APPLICATION

## INSTRUCTIONS



HOW TO  
APPLY



# PRECAUTIONS



Do not use existing ear tag holes. Application of the CERES RANCHER device in these existing holes could lead to damaging the ear.



Secondary components are sharp. Please exercise caution when handling.



Use best biosecurity hygiene practices.



For CERES RANCHER products only.



Once activated, the device must remain in sunlight and within operating temperatures to maintain optimal use.

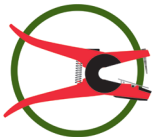
If you have any further queries, please visit our FAQ page at [cerestag.com/faq](https://cerestag.com/faq)

# PRODUCT COMPONENTS KEY

DEVICE



SECONDARY COMPONENT



APPLICATOR



CLAMP



ACTIVATION  
TOOL

# REGISTER THE DEVICE

## BEFORE APPLICATION

Getting Started with CERES TAG!

It's as easy as:

- ☒ **REGISTER**
- ☒ **CHARGE**
- ☒ **ACTIVATE**
- ☒ **APPLY**

Before you take your devices out of their packaging, head to <https://portal.cerestag.com/register> and register your devices using the QR code on the box.

# CHARGING THE DEVICE

## BEFORE APPLICATION

### CHARGE THE DEVICE

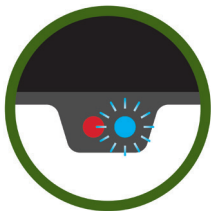


Before activating, ensure the CERES RANCHER devices have had sufficient opportunity to charge.

# CHARGING THE DEVICE

## BEFORE APPLICATION

### CHARGE THE DEVICE

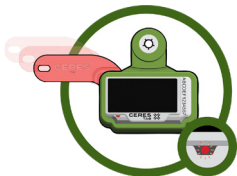


When the **BLUE** LED light begins to flash quickly, this indicated the tag is charging.

Once charging is complete, the LED will change to a slow flash.

# STEP 1

## ACTIVATE THE DEVICE



**Use the Activation Tool**  
and hold it flush against the  
device for at least five (5)  
seconds.

The **RED** LED will flash slowly  
when properly activated.

## STEP 2

### STERILISE THE SECONDARY COMPONENT

Dip or spray the Secondary Component with antiseptic solution.

**Use antiseptic solution at recommended dilution.**

**Note:**

Failure to do so may cause irritation.





## STEP 3

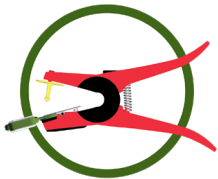
### INSERT THE COMPONENTS

Slide Device and Secondary Component onto the Applicator Pin.

Hold down the metal clamp and insert the Device down into the Applicator.

**Note:**

A spare Applicator Pin is located in the handle of the Applicator.



## STEP 4

### REMOVE OTHER TAGS

Remove all other tags\* and ensure there is sufficient space in the ear for the CERES RANCHER device.

\* this excludes regulatory tags.





## STEP 5

### PREPARE TO APPLY

Locate the correct position in the upper-middle area of the ear between the two visible cartilage tendons.

Squeeze the Applicator handles firmly until there is an audible click, then release.

**Note:**

Solar panels must be facing outwards. Use left or right ear as per regulatory requirements.



# DONE

## CONGRATULATIONS!

Your CERES RANCHER device is now active and applied.

To view your data, log into your Software Provider.



# REUSE



Clean any debris from the device before reuse.

**Repeat steps 1 to 5.**

**Note:**

Ensure the CERES RANCHER devices are charged in full sunlight before reuse.



# HAVE QUESTIONS?



Scan me to find  
all the answers  
to your  
questions!



<https://cerestag.com/pages/faqs>

CERES TAG, the CERES TAG logo, and CERES TAG product names mentioned are trademarks of CERES TAG LTD, registered in Australia and other countries.